

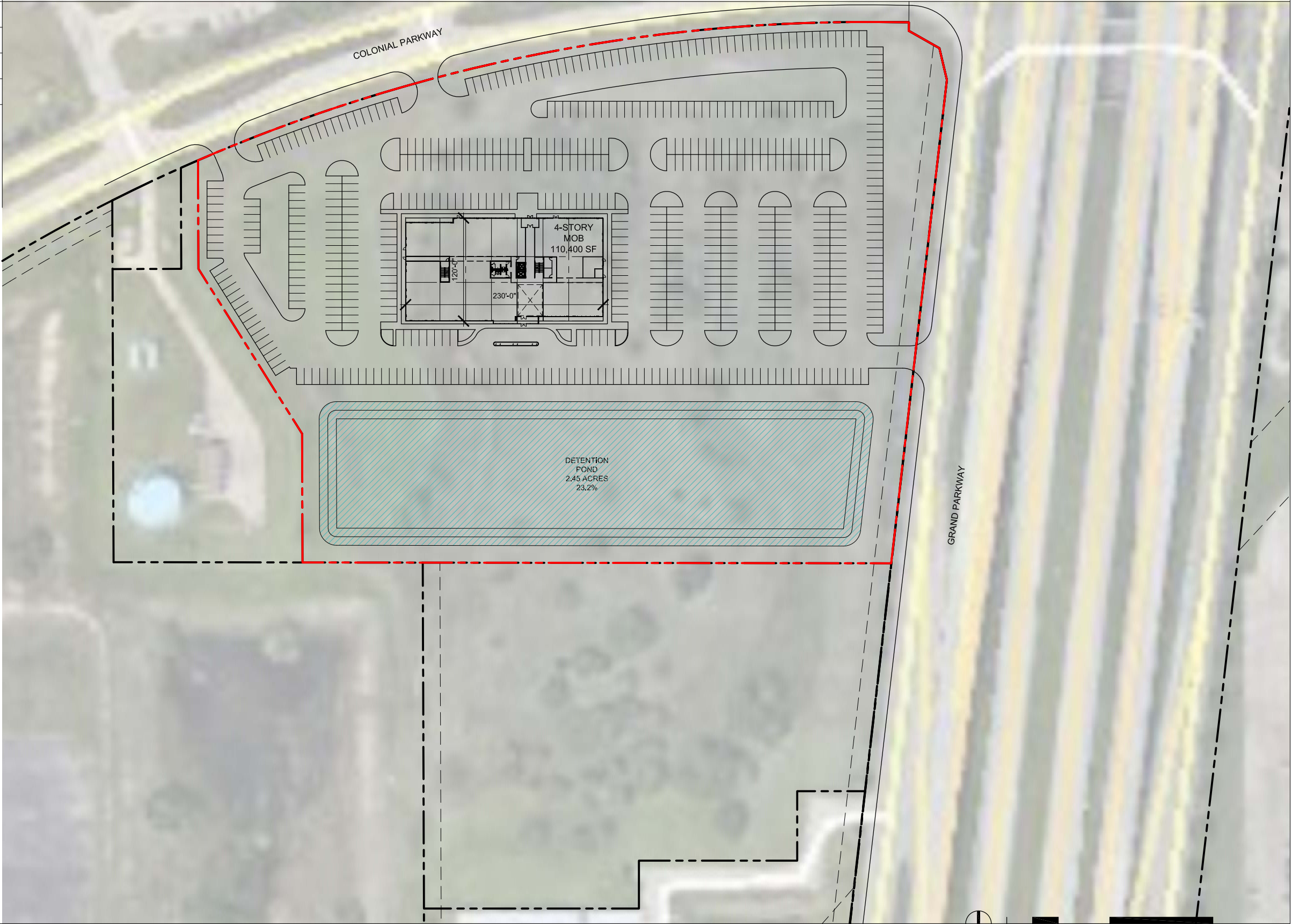
SITE 01 - SITE PLAN - GRAND PKWY & COLONIAL PKWY

TOTAL SITE AREA:10.5 ACRES (458,947.5 SF)

MOB:

TOTAL BUILDING AREA: 110,400 SF

TOTAL PARKING: 645 SPACES @ 5.8 / 1000



* PRELIMINARY NOT FOR CONSTRUCTION, PERMIT, OR REGULATORY APPROVAL. * BOUNDARY LINES AND EASEMENTS ARE PRELIMINARY & REQUIRE VERIFICATION - SURVEY NOT PROVIDED. * ALL BUILDING AREAS ARE APPROXIMATE UNTIL BUILDING FOOTPRINT/ ENTRY DESIGNS ARE FINALIZED. * RENDERING IS REPRESENTATIVE OF DESIGN INTENT ONLY. IT IS NOT A PHOTOREALISTIC REPRESENTATION OF ACTUAL MATERIALS PROPOSED AND SHOULD BE CONSIDERED PRELIMINARY AT ALL STAGES.

MCC I-10 & GRAND PARKWAY
a project for
MCCORMACK COMMERCIAL