

SITE 03 - SITE PLAN - WESTSIDE PKWY & COLONIAL PKWY

TOTAL SITE AREA: 19.5 ACRES (851,826.3 SF)

MIXED-USE:

TOTAL BUILDING AREA: 121,996 SF

TOTAL OFFICE: 87,840 SF

TOTAL RETAIL: 34,156 SF

TOTAL PARKING: 520 SPACES

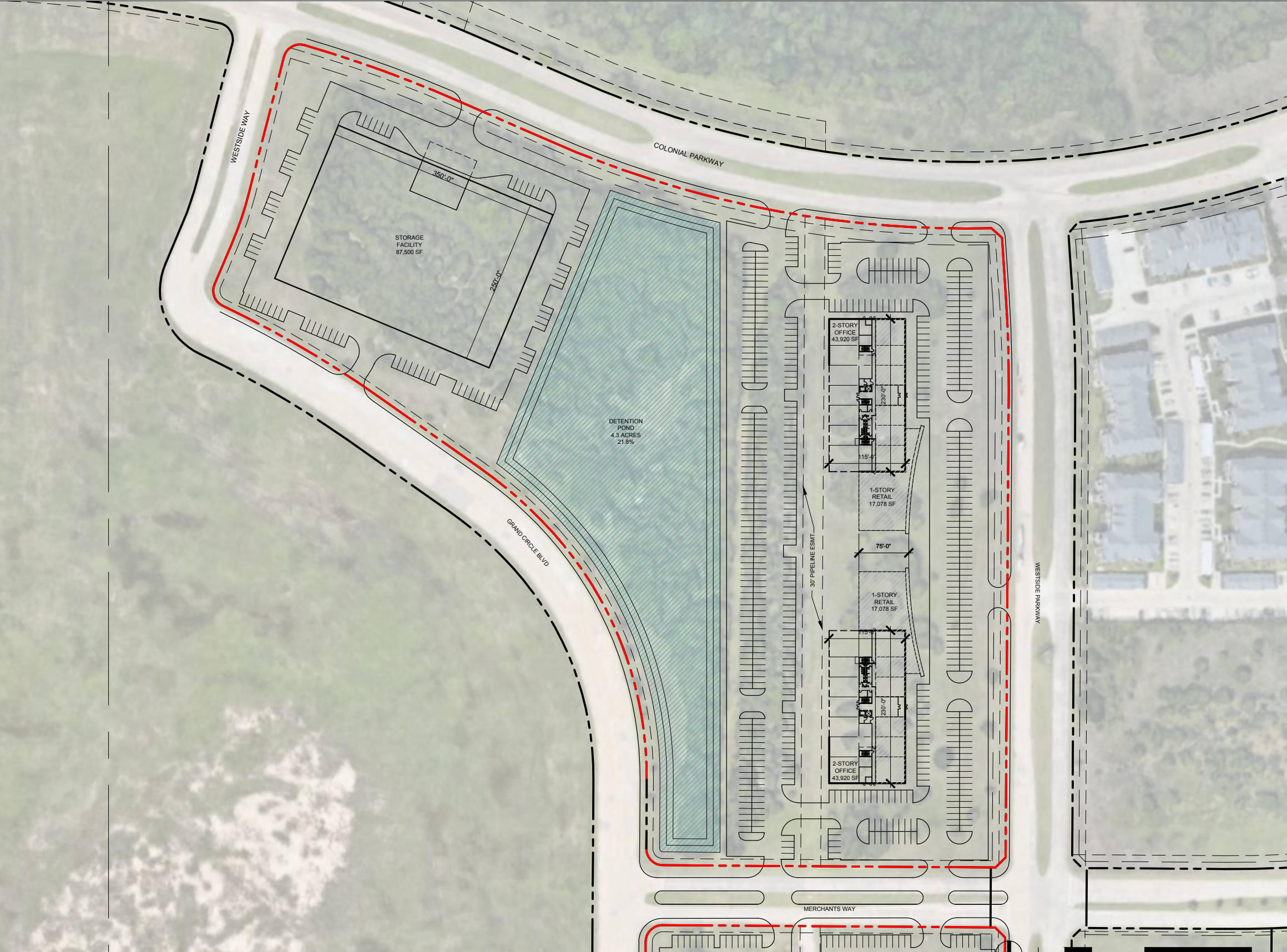
OFFICE PARKING: 350 @ 4 / 1000

RETAIL PARKING: 170 @ 5 / 1000

STORAGE FACILITY:

BUILDING AREA: 87,500 SF

TOTAL PARKING: 76 SPACES



* PRELIMINARY NOT FOR CONSTRUCTION, PERMIT, OR REGULATORY APPROVAL. * BOUNDARY LINES AND EASEMENTS ARE PRELIMINARY & REQUIRE VERIFICATION - SURVEY NOT PROVIDED. * ALL BUILDING AREAS ARE APPROXIMATE UNTIL BUILDING FOOTPRINT/ ENTRY DESIGNS ARE FINALIZED. * RENDERING IS REPRESENTATIVE OF DESIGN INTENT ONLY. IT IS NOT A PHOTOREALISTIC REPRESENTATION OF ACTUAL MATERIALS PROPOSED AND SHOULD BE CONSIDERED PRELIMINARY AT ALL STAGES.

MCC I-10 & GRAND PARKWAY
 a project for
MCCORMACK COMMERCIAL

