

# SITE 04 - SITE PLAN - WESTSIDE PKWY & I-10

**TOTAL SITE AREA: 18.7 ACRES (814,589 SF)**

**RETAIL:**

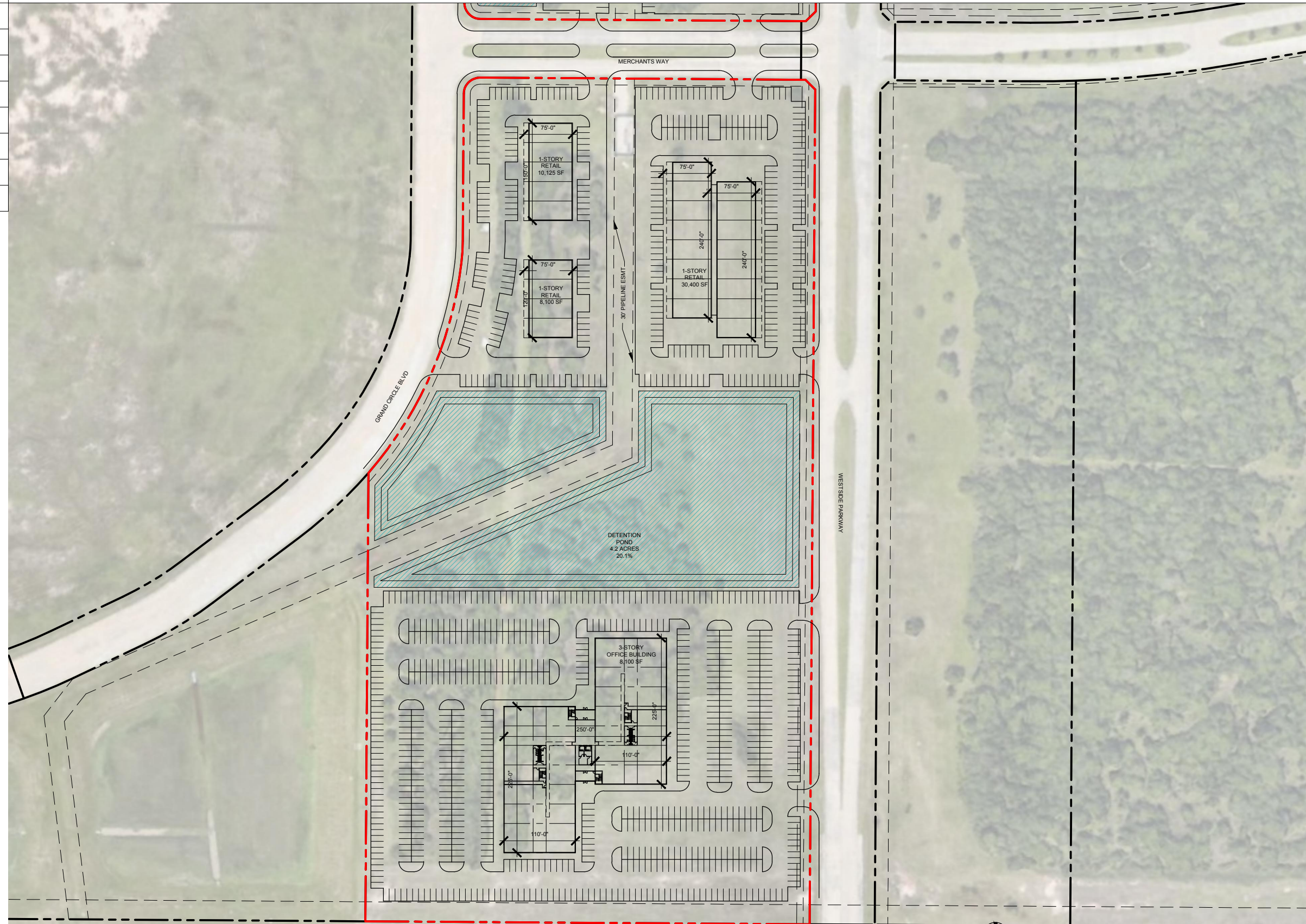
TOTAL BUILDING AREA: 48,625 SF

TOTAL PARKING: 300 SPACES @ 6.2 / 1000

**OFFICE:**

BUILDING AREA: 159,300 SF

TOTAL PARKING: 722 SPACES @ 4.5 / 1000



\* PRELIMINARY NOT FOR CONSTRUCTION, PERMIT, OR REGULATORY APPROVAL. \* BOUNDARY LINES AND EASEMENTS ARE PRELIMINARY & REQUIRE VERIFICATION - SURVEY NOT PROVIDED. \* ALL BUILDING AREAS ARE APPROXIMATE UNTIL BUILDING FOOTPRINT/ ENTRY DESIGNS ARE FINALIZED. \* RENDERING IS REPRESENTATIVE OF DESIGN INTENT ONLY. IT IS NOT A PHOTOREALISTIC REPRESENTATION OF ACTUAL MATERIALS PROPOSED AND SHOULD BE CONSIDERED PRELIMINARY AT ALL STAGES.

**MCC I-10 & GRAND PARKWAY**  
 a project for  
**MCCORMACK COMMERCIAL**

