

# SITE 02 - SITE PLAN - GRAND PKWY & PARTNERSHIP WAY

**TOTAL SITE AREA: 14.9 ACRES (650,354.4 SF)**

**BANK:**

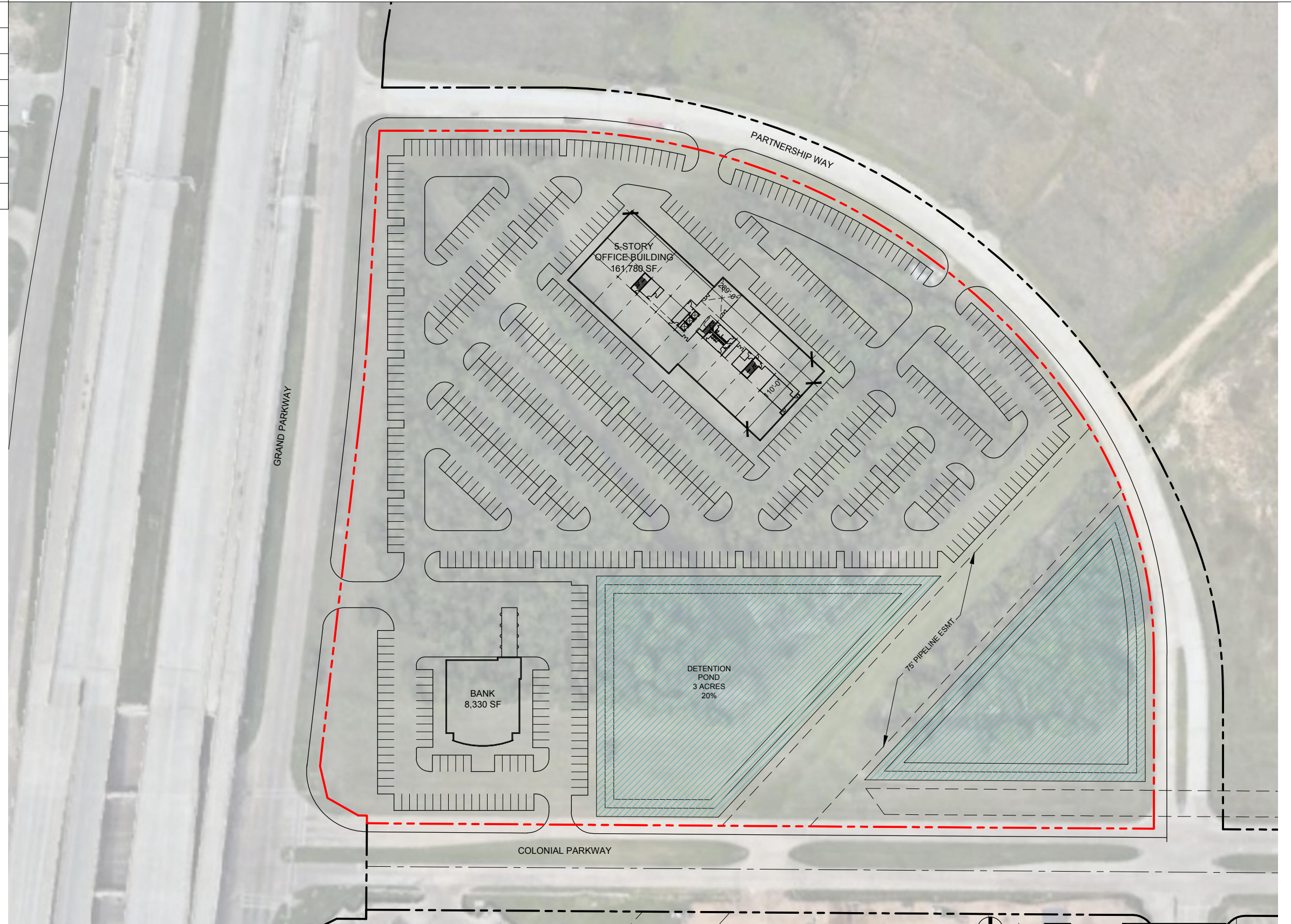
TOTAL BUILDING AREA: 8,330 SF

TOTAL PARKING: 95

**OFFICE:**

BUILDING AREA: 161,780 SF

TOTAL PARKING: 652 SPACES @ 4.0 / 1000



\* PRELIMINARY NOT FOR CONSTRUCTION, PERMIT, OR REGULATORY APPROVAL. \* BOUNDARY LINES AND EASEMENTS ARE PRELIMINARY & REQUIRE VERIFICATION - SURVEY NOT PROVIDED. \* ALL BUILDING AREAS ARE APPROXIMATE UNTIL BUILDING FOOTPRINT/ ENTRY DESIGNS ARE FINALIZED. \* RENDERING IS REPRESENTATIVE OF DESIGN INTENT ONLY. IT IS NOT A PHOTOREALISTIC REPRESENTATION OF ACTUAL MATERIALS PROPOSED AND SHOULD BE CONSIDERED PRELIMINARY AT ALL STAGES.



**MCC I-10 & GRAND PARKWAY**  
a project for  
**MCCORMACK COMMERCIAL**

